

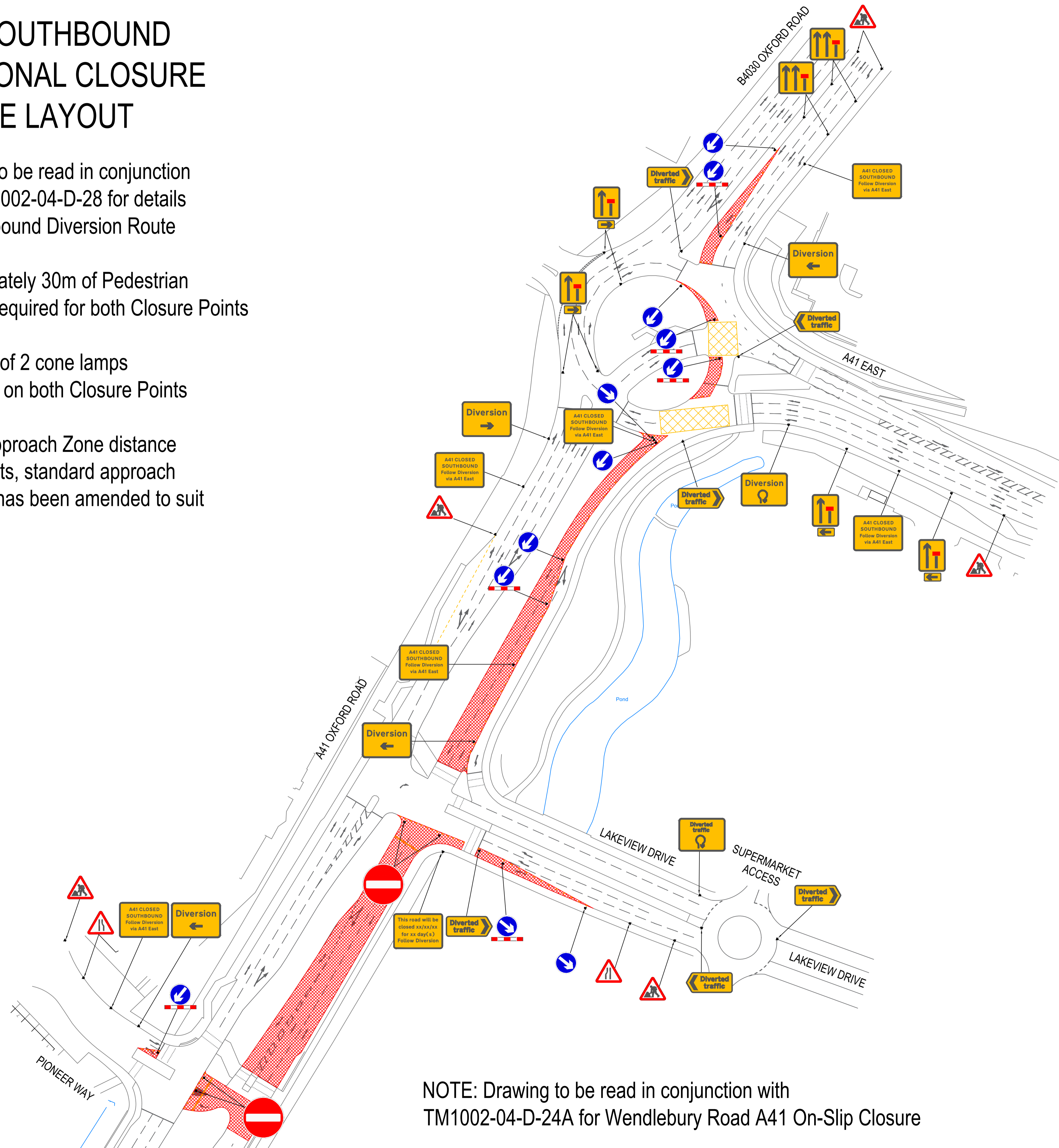
A41 SOUTHBOUND DIRECTIONAL CLOSURE SITE LAYOUT

NOTE: Drawing to be read in conjunction with TM1002-04-D-28 for details of Northbound Diversion Route

NOTE: Approximately 30m of Pedestrian Barrier Required for both Closure Points

NOTE: Minimum of 2 cone lamps required on both Closure Points

NOTE: Due to Approach Zone distance constraints, standard approach signage has been amended to suit



NOTE: Drawing to be read in conjunction with TM1002-04-D-24A for Wendlebury Road A41 On-Slip Closure



- NOTES:
- 1) All dimensions are in millimetres, unless stated otherwise.
 - 2) Do not scale from this drawing.
 - 3) TM will comply with the "Safety at Streetworks and Road works Code of Practice"
 - 4) All signing to be erected to "The Traffic Signs Manual Chapter 8" guidelines.
 - 5) This drawing may not show the normal roadworks signing that will be required (Refer to The "Traffic Signs Manual Chapter 8").

- KEY:
- Proposed Works Area
 - Safety Zones
 - Sign Location and Rotation
 - Pedestrian Barrier
 - Pedestrian Ramp

REVISIONS:			
REV	DESCRIPTION	INITIALS	DATE

PROJECT: BICESTER GATEWAY DEVELOPMENT
 TEMPORARY TRAFFIC MANAGEMENT
 TITLE: A41 OXFORD ROAD, BICESTER, OXFORD
 TEMPORARY DIRECTIONAL CLOSURE
 SHEET 3 OF 4

Capital TRAFFIC
 The Old Council Yard, Hedingham Road
 Great Yeldham, Essex, CO9 4HS
 t:01787 237509 e:info@capitaltraffic.co.uk

CLIENT: **ReachActive**

DESIGNED BY: BK	DRAWN BY: BK
CHECKED BY: AS	SCALE: NTS @ A1
DATE: 24/07/2020	DRAWING No: TM1002-04-D-2
REV: -	

© Crown Copyright 2020
 Reproduction in whole or in part is prohibited
 without prior permission of Ordnance Survey